



Manure management

Comfort for the cow and the farmer






Manure technology

Barn hygiene is the basic prerequisite for trouble-free milk production. Infection risk, claw diseases and, for example, mastitis, can be avoided by bringing and maintaining a high level of hygiene in the barn. However, hygiene measures depend heavily on the barn management and the installed equipment, but starts with keeping the walking alleys clean.

As experts with decades of experience in manure solutions, Royal de Boer is the right partner to offer you a high-level product portfolio. With its extensive range of manure removal equipment and manure solutions products, Royal de Boer has a solution for every barn. Does your barn have a solid or a slatted floor? We always offer you the manure system that suits your barn best!

Product categories

Our products are divided into three categories, based on product construction, design and customer requirements:

STANDARD 	<ul style="list-style-type: none"> • Fulfills the basic cow welfare requirement • Price/Quality ratio for every budget • Basic automation needs are provided
ADVANCED 	<ul style="list-style-type: none"> • Improvement of cow welfare • Advanced for a better future • High adaptability to your needs • Automation for comfort
PREMIUM 	<ul style="list-style-type: none"> • Cow welfare is main driver • Designed for maximum capacity and durability • Extensive automation focused on comfort and management

Products are shown with the icons of the product categories on the corresponding page. There are product groups where the **“Standard”** level is missing, as these groups are only available at an **“Advanced”** or **“Premium”** level.

ADDED VALUE

We have chosen this qualification to support you in making your choices. By taking the **“Standard”** product as a starting point. You can experience the added value of the **“Advanced”** and **“Premium”** products step by step and indicate whether the additional functionality also offers added value in everyone's opinion.

Disclaimer

Because specifications for scrapers and manure installations depend on the barn layout and your specific requirements, this brochure discusses complete systems and does not go into too much detail about product specifications. Should you require this, your dealer and/or our area sales manager can advise you.



STANDARD

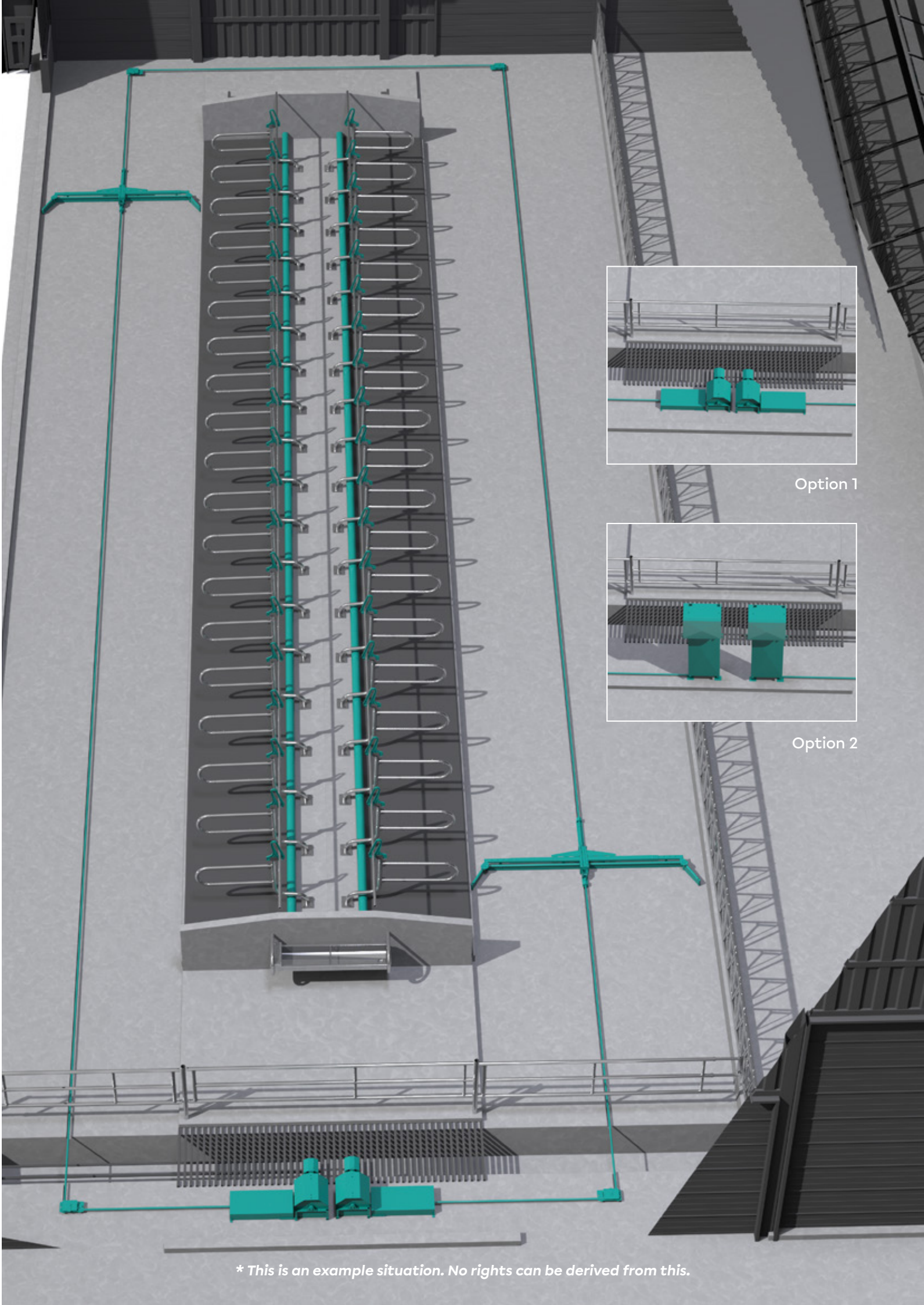


Concept barn

Our Standard product line could be called the “basic variant” for small and medium-sized barns. The installation features basic automation. The Standard manure product line is for the livestock farmer looking for a user-friendly and reliable installation that is easy to maintain.

The **Standard barn concept** is made up of the following elements:

Option 1: Duo Compact I	Option 2: Duo Compact Rope
<p>Barn type:</p> <ul style="list-style-type: none">Stroke length up to 65 meters <i>(with 2 scrapers per alley 130 meters)</i>	<p>Barn type:</p> <ul style="list-style-type: none">Stroke length up to 80 meters <i>(with 2 scrapers per alley 160 meters)</i>
<p>Elements:</p> <ul style="list-style-type: none">2 units Duo Compact I drivesRSC+ control boxStandard Combi scraperStandard corner wheels, Ø20cm9 mm plastic-coated steel cable	<p>Elements:</p> <ul style="list-style-type: none">2 units Duo Compact Rope drivesRSC+ control boxStandard Combi scraperStandard corner wheels, Ø20cm18 mm poly rope
<p>Upgradable with:</p> <ul style="list-style-type: none">Advanced corner wheels, Ø32cmDG-321 Premium control boxAdvanced Combi scraperEuroneema rope, 8 or 10 mmSuperstructure to build in the Duo Compact I at height, so it is out of reach of the cows	<p>Upgradable with:</p> <ul style="list-style-type: none">Advanced corner wheels, Ø32cmDG-321 Premium control boxAdvanced Combi scraperEuroneema rope, 8 or 10 mm. Allowing a stroke length of up to 90 meters.



Option 1

Option 2

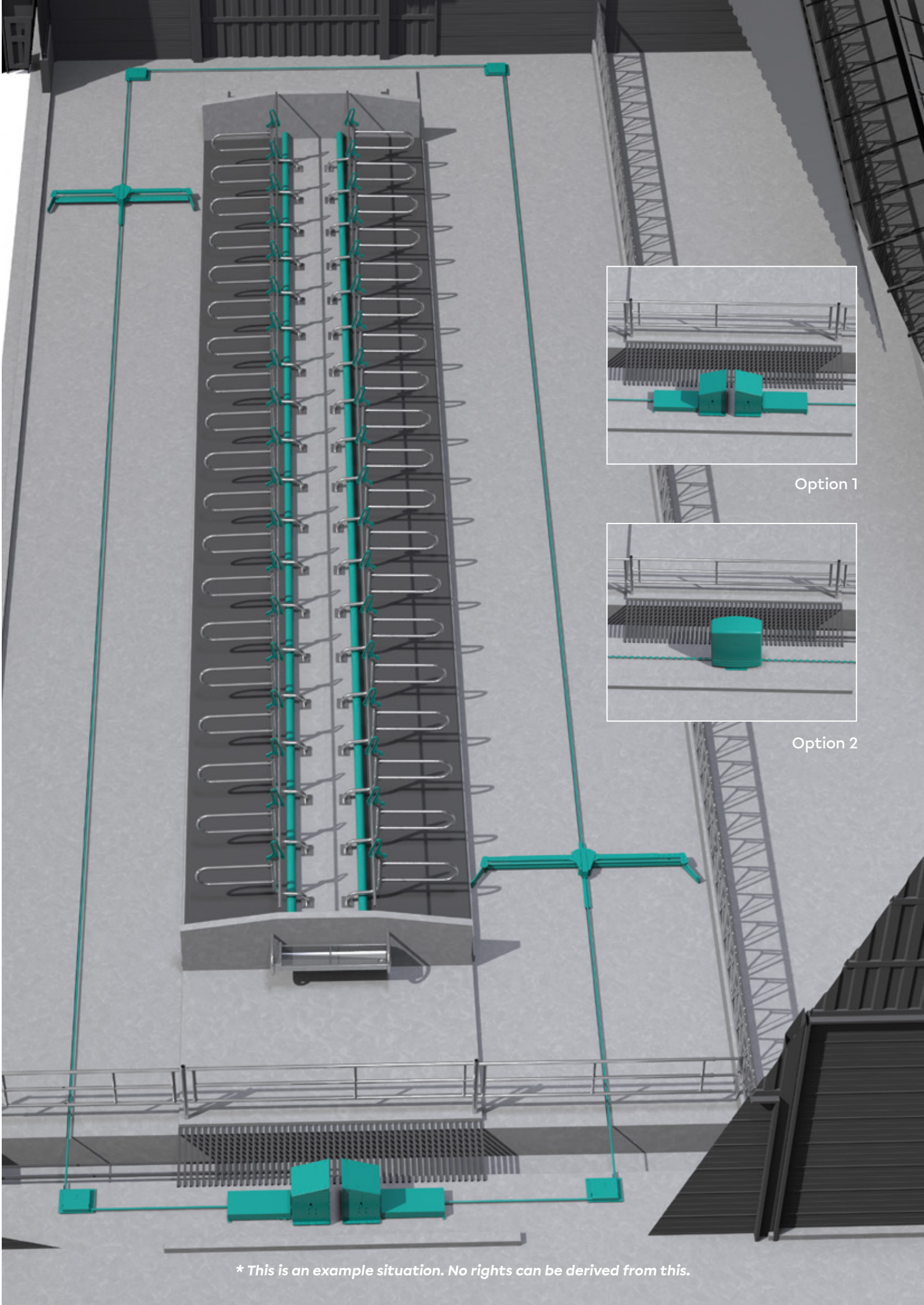
* This is an example situation. No rights can be derived from this.

Concept barn

Our Advanced product line consists of a complete installation for medium and larger barns. The Advanced manure product line is developed for higher capacity needs and for the livestock farmer who wants to invest in an automation focused on comfort.

The **Advanced barn concept** is made up of the following elements:

Option 1: Duo Compact II	Option 2: XScape Chain manual tensioner
Barn type: <ul style="list-style-type: none"> Stroke length up to 100 meters (with 2 scrapers per alley 200 meters) 	Barn type : Full chain <ul style="list-style-type: none"> Stroke length up to 110 meters (Maximum circuit length up to 250 meters) Combination chain/cable <ul style="list-style-type: none"> Stroke length up to 190 meters (Maximum circuit length up to 400 meters)
Elements: <ul style="list-style-type: none"> 2 units Duo Compact II drives Premium DG-321 control box Advanced Combi scraper Advanced corner wheels, Ø32cm 9.5 mm plastic-coated steel cable 	Elements: <ul style="list-style-type: none"> An XScape Chain installation with manual tensioner Premium DG-321 control box Advanced Combi scraper Advanced corner wheels, Ø32cm 13 mm chain or in combination with 12 mm plastic-coated steel cable between the scrapers
Upgradable with: <ul style="list-style-type: none"> Euroneema rope 8 or 10 mm 	
To be simplified with : <ul style="list-style-type: none"> Standard Combi scraper 	To be simplified with : <ul style="list-style-type: none"> Standard Combi scraper

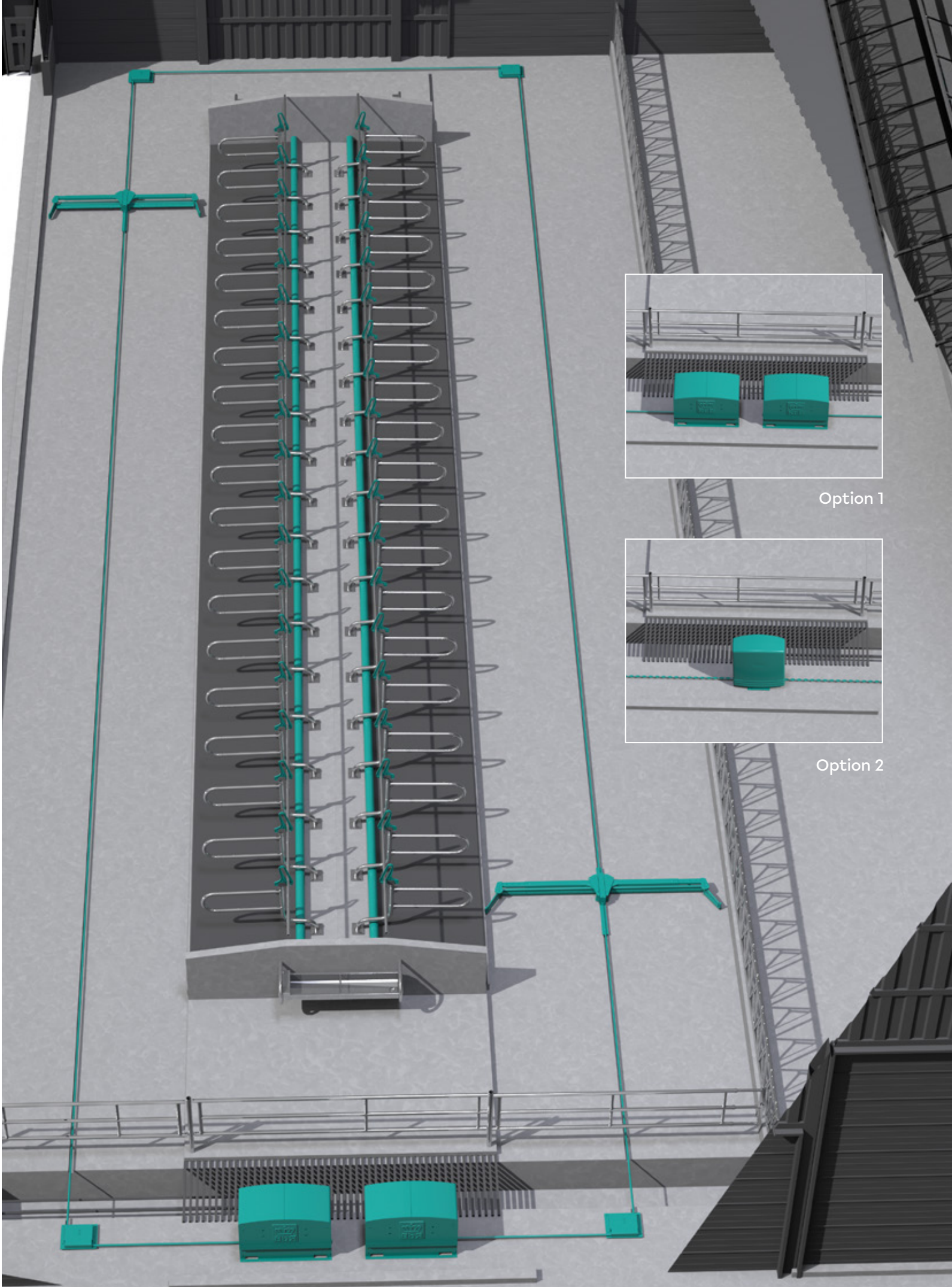


Concept barn

Our Premium product line consists of installations suitable for large barns and intensive use. The Premium installations have the highest level of automation. The Premium manure product line is for the livestock farmer looking for a robust installation in which processes are automated and controlled.

The **Premium barn concept** is made up of the following elements:

Option 1: Duo Compact III	Option 2: XScape chain automatic tensioner
<div>Barn type:</div> <ul style="list-style-type: none">Stroke length up to 140 meters (with 2 scrapers per alley 280 meters)	<div>Barn type :</div> <div>Full chain</div> <ul style="list-style-type: none">Stroke length up to 110 meters (Maximum circuit length up to 250 meters) <div>Combination chain/cable</div> <ul style="list-style-type: none">Stroke length up to 190 meters (Maximum circuit length up to 400 meters)
<div>Elements :</div> <ul style="list-style-type: none">2 units Duo Compact III drivesPremium DG-321 control boxAdvanced Combi scraperAdvanced corner wheels, Ø32cm12 mm plastic-coated steel cable or Euroneema rope 10 mm	<div>Elements:</div> <ul style="list-style-type: none">An XScape Chain system with hydraulic tensionerPremium DG-321 control boxAdvanced Combi scraperAdvanced corner wheels, Ø32cm13 mm chain or in combination with 12 mm plastic-coated steel cable between the scrapers
<div>To be simplified with :</div> <ul style="list-style-type: none">Standard Combi scraper	<div>To be simplified with :</div> <ul style="list-style-type: none">Standard Combi scraper



* This is an example situation. No rights can be derived from this.

Overview pull medium

Poly rope

- 18 mm polyester rope
- Highly abrasion-resistant
- Animal friendly
- Slightly stretchable



Euroneema

- 8 or 10 mm Euroneema rope
- Very high tensile strength
- Wear-resistant
- Non stretching



Plastic-coated steel cable

- 9, 9.5 or 12 mm steel cable with a PP (Poly propylene) casing
- Made of galvanized steel cable with a few thicker wires per strand, creating space in the cable so that the PP sheath adheres
- Wear-resistant
- Corrosion-resistant
- Non stretching



Chain

- 13 mm steel chain
- High quality
- Available in hardened and non-hardened versions



Overview manure technology

STANDARD



Duo Compact I

- Direct drive for low energy consumption
- Low maintenance
- Two drive units are required per manure system

STANDARD



Duo Compact Rope

- Animal friendly superstructure placed on a tower
- Simple robust system
- Two drive units are required per manure system

ADVANCED



Duo Compact II

- Large stainless steel drum for longer life
- Suitable for heavier loads (medium and large barns)
- Two drive units are required per manure system

ADVANCED



XScrape Chain with manual chain tensioner

- Compact, highly accessible
- Designed for intensive use
- Low energy consumption
- Reliable robust installation

PREMIUM



Duo Compact III

- Robust, durable, easy to maintain
- Low energy consumption
- Highly suitable use on large-scale barns
- Two drive units are required per manure system

PREMIUM



XScrape Chain with hydraulic tensioner

- Automatic tensioning device: always keeps the chain at the correct preload
- Longer chain- and drivewheel lifetime
- Designed for intensive use
- Low energy consumption
- Reliable robust installation

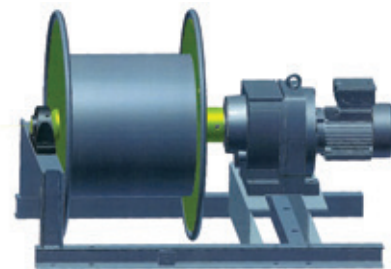


Duo Compact I

With a stroke length of 65 meters with 1 scraper per alley and 130 meters stroke length with 2 scrapers per alley, the Duo Compact I is particularly suitable for smaller and medium-sized barns. The Duo Compact I is suitable for slatted and solid floors. The Duo Compact installation has two drive units, one drive unit rolls up and pulls the scraper, while the other releases the pulling medium. As pulling medium, you can choose from plastic-coated galvanized steel cable or, as an option, Euroneema, a high-tensile synthetic fibre rope.

Available in a Standard version with a Standard manure scraper, compact corner wheels and basic control technology. On request, this manure unit can be upgraded to an Advanced version.

Applicable with:



Highlights:

- Basic system with a favorable total cost of ownership
- Reliable, efficient drive technology
- Combination of low motor power and sensitive switching technology makes this a very animal safe installation
- Stroke length of up to 65m with 1 scraper per alley and 130m stroke length with 2 scrapers per alley
- Available in a Standard version, with the option of upgrading to an Advanced installation



Duo Compact Rope

The Duo Compact Rope is a proven manure system with a long history. An efficient geared motor drives a drum through a chain transmission. At the frame bottom, the rope is fed in via a corner wheel. The hot-dip galvanised frame is covered with stainless steel cladding.

The drive of the Duo Compact Rope consists of two drive units that alternately wind or unwind a rope on a drum. This makes the system also suitable for barns with one or three alleys. Depending on conditions and design, the rope system can clean alleys with a stroke length of up to 80 meters with 1 scraper per alley and up to 160 meters of stroke length with 2 scrapers per alley.

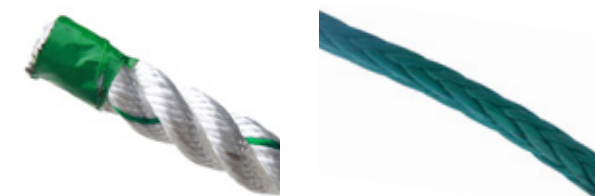
A 18 mm polyester rope is used as the pulling medium in the Duo Compact Rope drive. Polyester rope is one of the most animal-friendly materials to use on walking alleys. It hardly forms an obstacle, is relatively soft and has no sharp edges. Instead of polyester rope, the Duo Compact Rope can also be equipped with Euroneema rope.

Highlights:

- Basic installation with a favorable total cost of ownership
- Requires no re-tensioning, therefore less time needed for maintenance
- Combination of low motor power and sensitive switching technology makes this a animal safe installation
- Low operating speed
- Can be used on slatted and solid floors



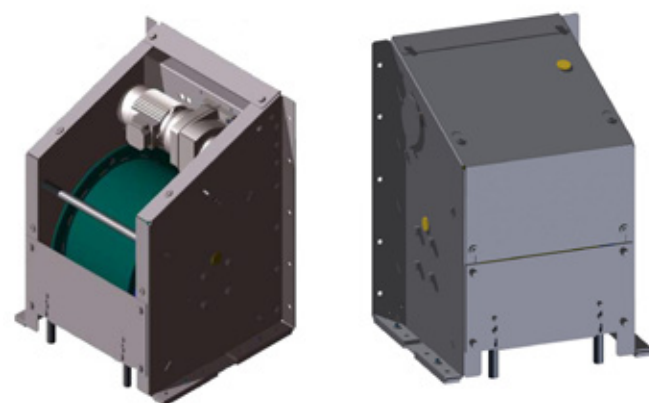
Applicable with:





Highlights:

- Robust, compact and durable; suitable for large barns
- Also suitable for barns with 1 or 3 manure alleys
- Low maintenance
- Stainless steel drum with high-quality chain transmission
- Low costs due to relatively low drive power



Duo Compact II

The Duo Compact II is a robust but compact cable drive system. An installation consists of 2 drive units, with one unit rolling up the cable and the other unrolling the cable during a run. The Duo Compact II is suitable for medium to large barns. With a stroke length of 100 meters per alley with 1 scraper and up to 200 meters stroke length for an alley with 2 scrapers. Duo Compact II is also suitable for barns with an uneven number of manure alleys.

Combined with the robust Advanced Combi scraper, low-maintenance large-diameter corner wheels and the Premium DG-321 control box, the Duo Compact II forms a complete system at a high level of quality and functionality.

The Duo Compact II is compact in design. The systems can be placed back-to-back or separately of each other.

Applicable with:



XScape chain

The XScape chain is a sophisticated chain drive for manure removal. During development, great attention was paid to robustness, ease of cleaning and reducing maintenance. By removing the two plastic covers, the system is easily accessible for maintenance and cleaning. Maintenance and cleaning can be carried out from the shop floor due to the reduced height of the drive unit.

Our chain drive is designed for a stroke length of up to 190 meters, when you choose chain/cable combination. The user-friendly drive unit features a unique sprocket, a specially designed chain, a maintenance-free chain tensioner and adjustable overload protection. With the chain drive, you have the option of cleaning the barn 24 hours a day.

PREMIUM

To make operation even easier, the drive unit can optionally be fitted with a hydraulic automatic tensioner (**Premium version**), which keep the chain at the correct tension.



Applicable with:



Highlights:

- Reliable, compact drive technology for maximum efficiency
- Automatic or manual chain tensioner
- Adjustable overload protection
- Operator-friendly design
- Maximum stroke length of 110m with chain only. With a chain-rope combination, a stroke length of up to 190m is possible
- Low power requirement





COMING SOON

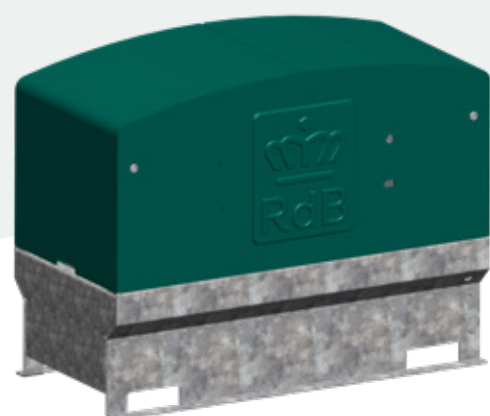
Duo Compact III

The Duo Compact Type III is the largest and heaviest in the Duo Compact series. The installation consists of two drive units that successively wind or unwind the cable. The Duo Compact III is suitable for cleaning long alleys with a stroke length of up to 140 meters with 1 scraper per alley and up to 280 meters of stroke length for 1 alley with 2 scrapers.

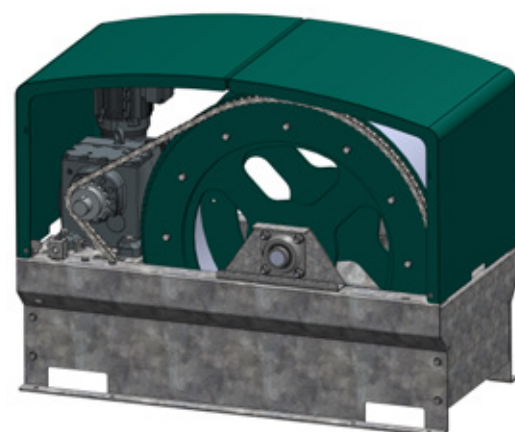
The drive unit is robustly built, has few rotating parts and is easily accessible to reduce and facilitate maintenance. Operation and monthly maintenance requires little effort.

Combined with the robust Advanced Combi scraper, low-maintenance large-diameter corner wheels and the Premium DG-321 control box, the Duo Compact III forms a complete installation at a high quality level.

Simplicity, robust, durable, energy-efficient and therefore reliable with low service costs makes the Duo Compact III the best choice for professional large-scale companies.



Applicable with:



Highlights:

- Reliable, compact drive technology for maximum efficiency
- Operation- and maintenance-friendly design
- Maximum stroke length of 280m with 2 scrapers per alley
- Low power requirement
- Optimum animal protection thanks to Premium DG-321 control box

Notes



RSC+ Control box

The RSC+ control box is suitable for all Royal de Boer cable and rope manure installations. The control box is easy to operate. All daily routines can be controlled with switches and buttons.

When the scraper runs against a blockage, for example a cow, the control box will automatically stop. Optionally, the control box can send an alert by SMS when the scraper is blocked.

Using a frost protection module, the manure scraper can automatically run continuously as soon as the temperature drops below a set value.

Highlights:

- Simple to operate, basic functionalities
- Large number of possible start times
- Very robust housing



DG-321 Control box

The DG-321 control box is suitable for **all Royal de Boer manure installations**. The DG-321 controls up to three Royal de Boer manure installations with only one control box, depending on the version.

If you choose the basic version, the manure systems start one after the other. You can also choose for a more elaborate version where the drive systems can start up simultaneously.

When the scraper runs against a blockage, for example a cow, the control box will automatically stop. It can be specified how many times the control box should try again. If the blockage does not go away, the scraper will go backwards and stop. The user is informed of the malfunction via his/her smartphone.

All versions of the DG-321 control box can control an external device such as, for example, a pump or transverse discharge system.

DG-321 for 1 drive system	DG-321 for 3 drive systems separately	DG-321 for 3 drive systems simultaneously
Suitable for 1 drive system	Suitable for three drive systems that cannot run simultaneously	Suitable for three drive systems that can run simultaneously

Daily operation can be done via push buttons on the control box itself or via a smartphone. Settings can be changed via a smartphone or PC, protected by a password.





Standard Combi scraper

The Standard Combi scraper is our entry-level scraper for closed floors with a strong price-to-clean ratio. The scraper is suitable to combine with all Royal de Boer drive units.

Features of the Standard Combi scraper are:

- Modular construction, easily adapted to the manure alley width and customer requirements
- Fully hot-dip galvanized
- Constructed in a straight position, not foldable
- Can be fitted with PU cleaning strips and wear-resistant strips made of Raex steel, for extra cleaning functionality or a longer service life
- The guide strip slides in and runs behind the scraper, thus reducing the distance to the corner wheel or the discharge.

Highlights:

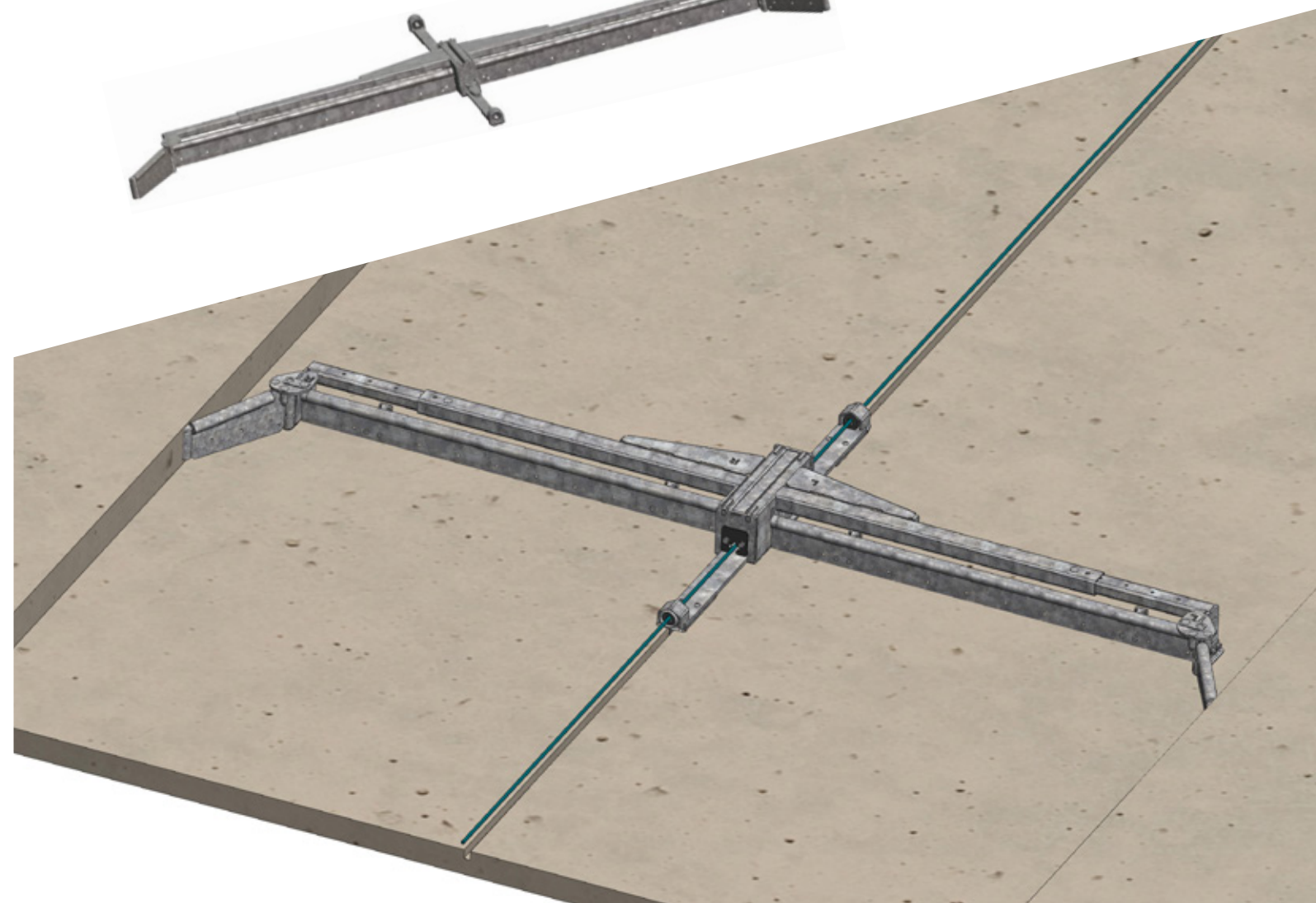
- Modular construction
- No sharp edges
- Fully hot-dip galvanized
- Available for alley widths from 1.8 to 5.1 meters
- Scraper blades can optionally be fitted with cleaning or wear-resistant strips



Manure scrapers

You complete your barn hygiene by providing a clean, dry and grippy walking alley. This leads to dry claws, cleaner cows and clean cubicle bedding. This is not only pleasant, but also saves you costs. Royal de Boer has a suitable scraper for every barn and floor type. The modular construction of the scrapers makes them easy to adapt to the type of barn floor.

The use of modern technology makes our scrapers functional, reliable and animal friendly. We also have the right scrapers for low-emission floors; ask your dealer or area sales manager about the possibilities.





Superclean manure scraper

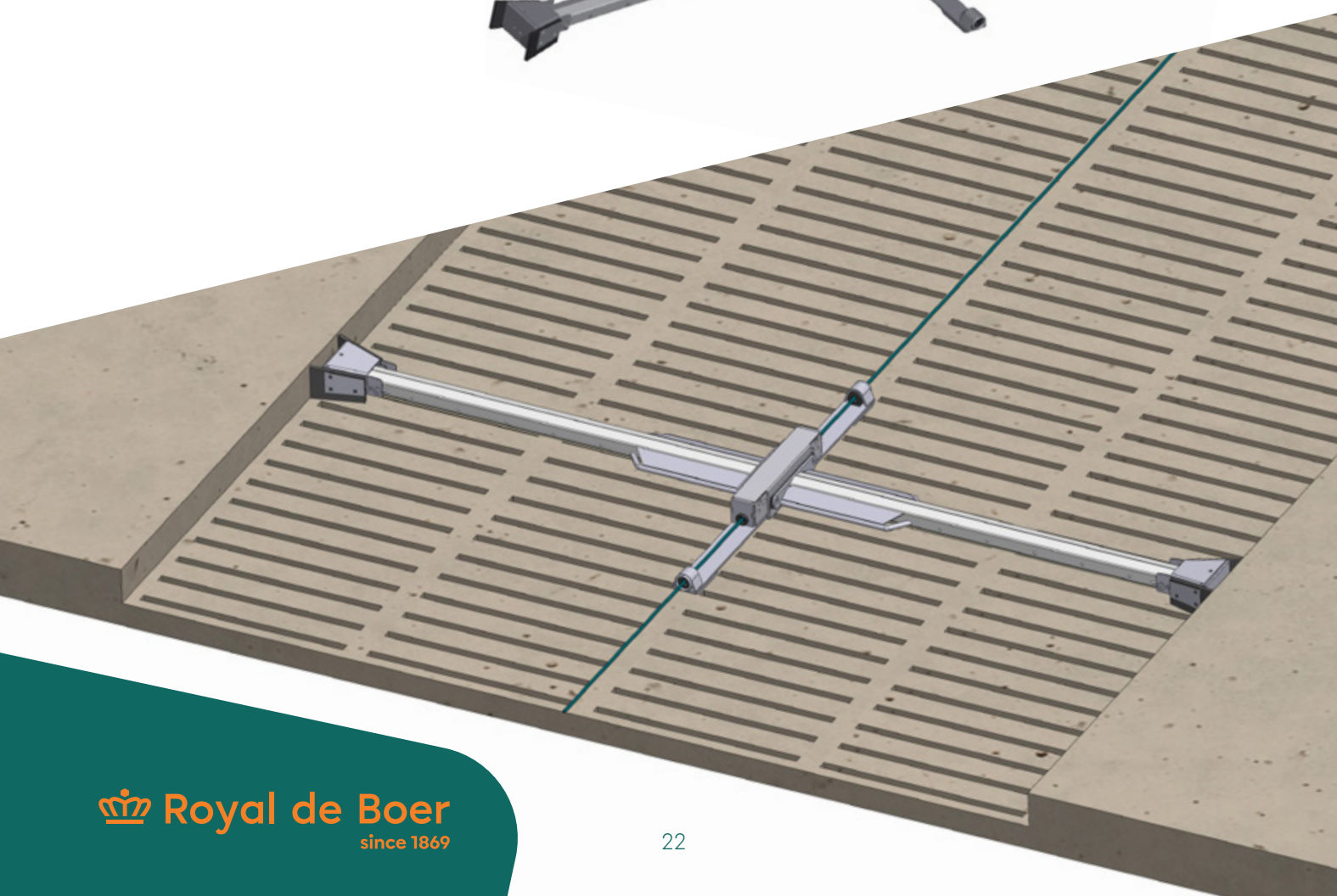
The Superclean manure scraper is a modular scraper designed for slatted floors. The fully galvanised scraper with clamped PU cleaning strip is very animal friendly due to its specific design. The width of the scraper can be easily adjusted.

The Superclean scraper has a modular construction. This makes it easy to adapt the scraper to customer requirements using standard parts.

The scraper is compatible with all Royal de Boer unit drives.

Highlights:

- Animal-friendly design
- High degree of cleaning slatted floors
- Easy replacement of PU strip
- Available for manure alley widths from 1.7 to 4.5 meters



Advanced Combi scraper

The Royal de Boer Advanced Combi scraper is a scraper for any closed floor. Its design focuses on versatility, optimal cleaning and comes in a robust, animal-friendly design.

The scraper comes with numerous features as standard:

- The arms of the Combi scraper can be set in a straight or inclined (15 degrees) position. This depends on your barn layout and the amount of manure to be collected.
- The arms can be folded, making it possible to move the scraper when, for example, filling the cubicles beddings.
- The guide strip in the middle is retractable and always runs behind the scraper. This makes it possible to clean the manure alley from start to finish.
- For additional cleaning results, the scrapers can be fitted with a flexible wear-resistant PU strip.
- If you want to reduce your maintenance intervals, you can fit the scraper with a wear-resistant Reax steel strip. The cleaning result will be slightly less, but the service life of the wear material is much longer.

The Combi scraper is also available in a double-functioning version (Bi-Directional).

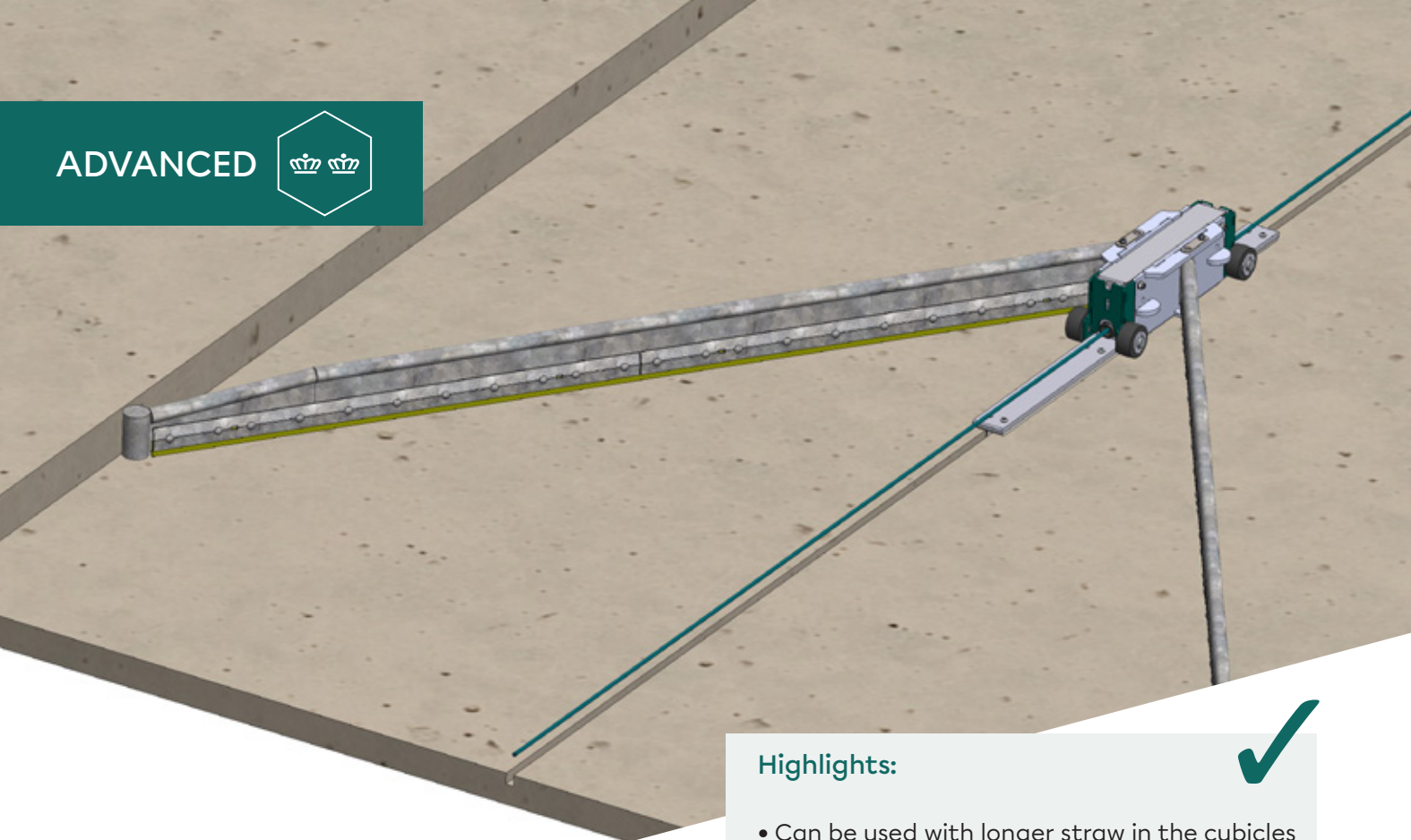
The **Bi-Directional** scraper can clean alleys where the discharge is not at the end of the alley, but for example in the middle of the alley. The scraper can scrape the manure in both directions, making it possible to use one scraper per alley.



Highlights:

- Robust design made of galvanized steel for longer life.
- Modular design
- Foldable arms
- Safe for cows as the scraper contains no sharp edges
- Minimal maintenance required
- Available for alley widths from 1.7 to 5.1 meters
- The Bi-Directional version can scrape the manure in both directions





Highlights:

- Can be used with longer straw in the cubicles or straw areas
- The shape of the manure scraper guides the manure to the centre of the alley, so claws keep cleaner
- Available for alley widths from 1.6 to 5.0 meters
- The Bi-Directional version can be scrape the manure in 2 directions



Folding scraper

When you choose a folding scraper, you are choosing a scraper that can easily handle long straw in alleys. Because the arms fold in on the return stroke, less straw gets snagged by the narrow construction on return. This saves a lot of manual cleaning work at the beginning of the alley. The alley needs a center profile in the middle to guide the scraper.

As the scraper takes some time to go from closed position to working position, it is useful to park the scraper outside the animals' walking area.

The folding scraper is fitted as standard with PU cleaning strips for an optimal cleaning result or with Reax steel strips if a more wear-resistant version is desired.

The scraper can also be reversible if a middle discharge is present, with this the scraper cleans the alleys on both sides of the discharge.

The folding scraper can be combined with all Royal de Boer drives.



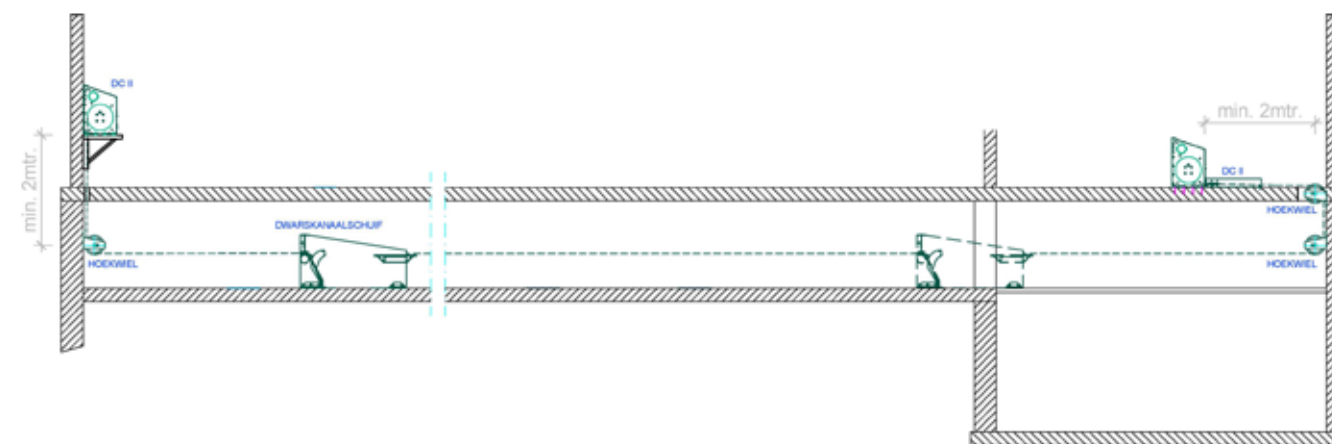
Cross channel scraper



To complete our range of scrapers, we offer the cross channel scraper. In this system, the manure is conveyed from several alleys to a cross channel. The cross channel scraper brings the manure to a central pit.

The cross channel scraper can achieve a stroke length of up to 37 meters. If the stroke length exceeds this, a second cross channel scraper must be used.

The Duo Compact II is often used as the drive unit.



Example situation



Eisele PTO & Combimixer

Main advantages of the shaft agitators in our range are their large capacity, robust construction and long service life due to the stainless steel stirring rod. The manure mixer is available in lengths from 3.5 to 6 meters.

Given its many advantages, the auger principle was deliberately chosen. Through the casing, the auger rotates in a tunnel, creating an even greater thrust. Unlike a screw, this auger mixer can never be blocked by feed residues. The mixer works suction and pulls itself into the opening of the weir wall.

Highlights:

- Large pump action and high yield
- Low risk of clogging
- Requires less power
- Drive shaft runs in oil bath
- Wear-resistant oil bath mechanical seal
- Optionally available in adjustable three-point linkage
- For effective mixing in slurry channels



PREMIUM



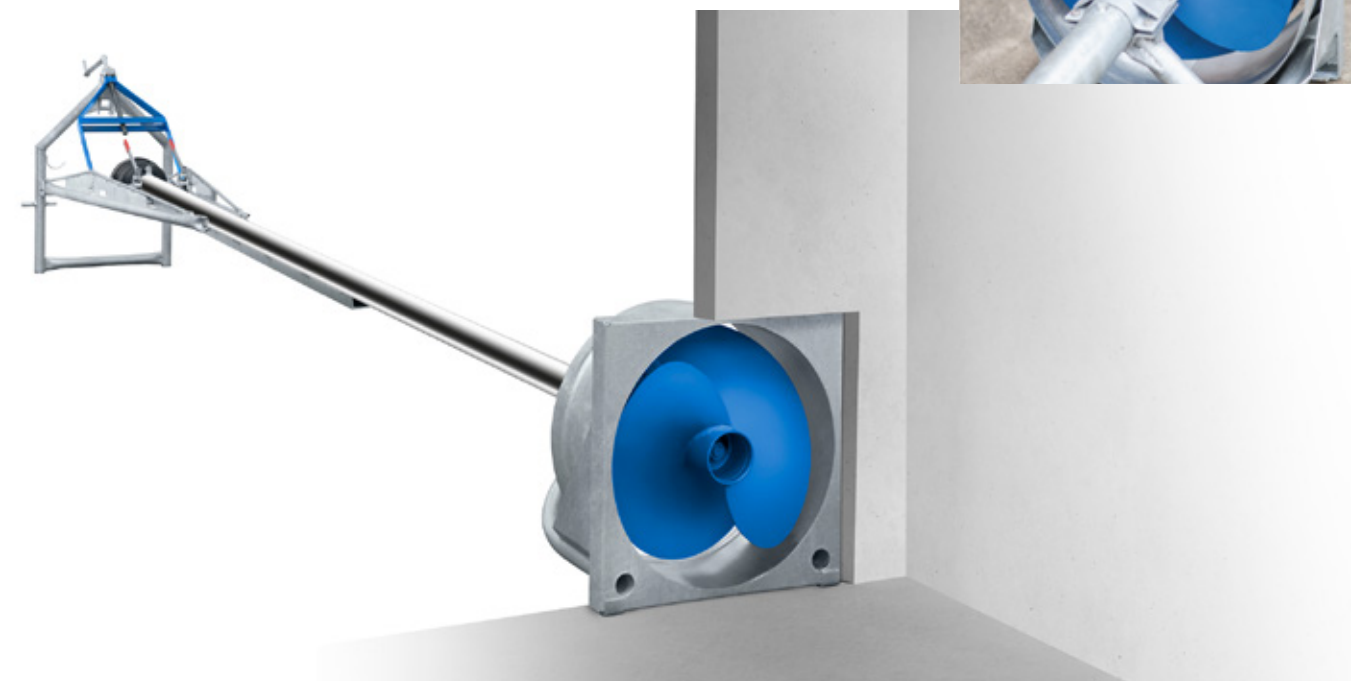
The manure mixer is also available as a Premium version, the **Combimixer**. The combi mixer can be driven either by PTO or electrically with a 15 kW electric motor. The combi mixer is available in lengths of 5.0, 5.5 and 6.0 meters.

Mixers and pumps

We are proud to be supplier of the Eisele range. Eisele pumps and mixers are high-quality products that combine durability and efficiency. They are mostly available in tractor-driven or electric versions.

Manure mixers are highly efficient tools for mixed manure spreading and preventing or breaking down floating and sinking layers in the manure pit. Royal de Boer's manure mixers have a high capacity which significantly reduces the time needed to mix a storage. The required mixer capacity strongly depends on the type and size of the manure storage and the frequency of mixing the manure.

To transfer manure, a very extensive portfolio is available, so a good solution can be found for every application.





Eisele Submersible agitator

Submersible agitator for installation in silos and pits

The submersible manure mixers can be used in basements, silos, manure bags, folio basins and biogas pits.

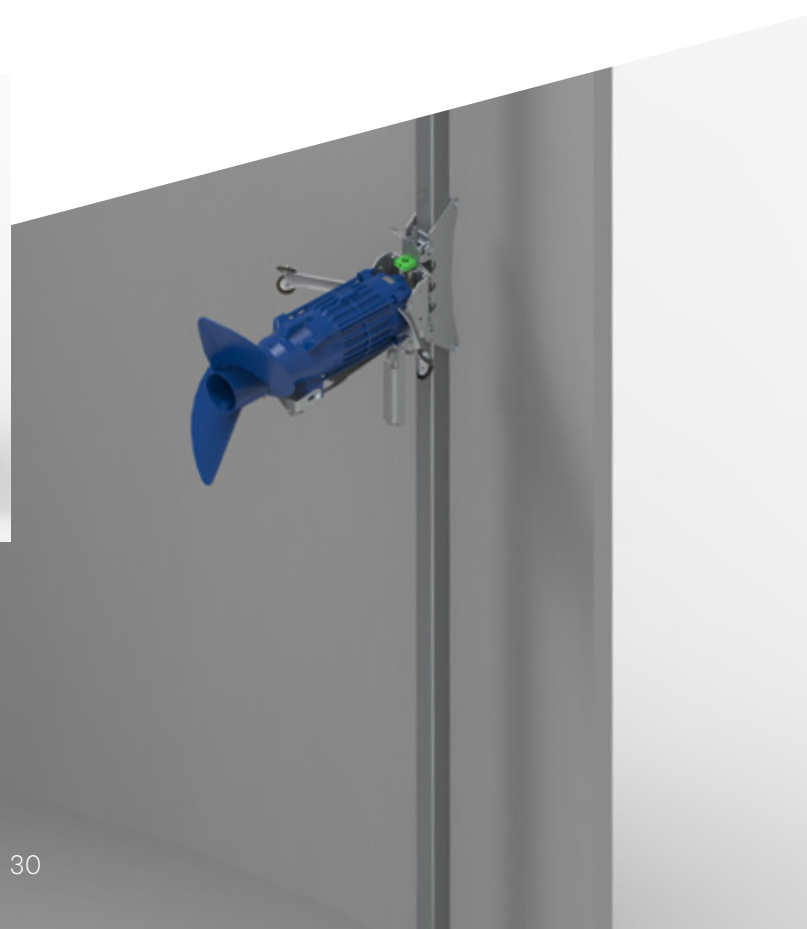
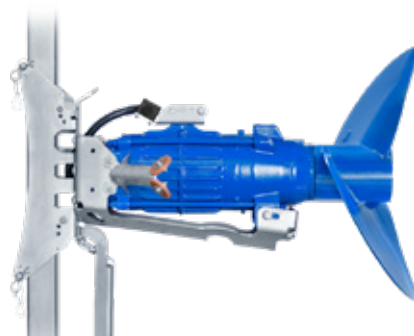
The manure mixers are available from 2.2 to 22.5 kW capacity. In a basic version with painted steel screw and galvanised suspension parts, or in an optional stainless steel version.

Controls range from simple with a manual reversing switch to fully automated freely selectable daily start-up times. If desired, the installation can be fitted with level measurement, which means it switches off when the manure level is too low or too high.

The mixer itself is fitted with a Premium ceramic seal. The motor is also protected by a built-in leakage measurements and temperature measurement in the motor windings. This prevents damage to the motor should anything go wrong.

Highlights:

- Available up to an immersion depth of 4.0 m
- Large power range
- High effectiveness
- High-tech and well protected against calamities.



Submersible agitator for installation in ring channels

Submersible agitator is increasingly used for mixing channels. These agitators are enormously efficient and therefore effective.

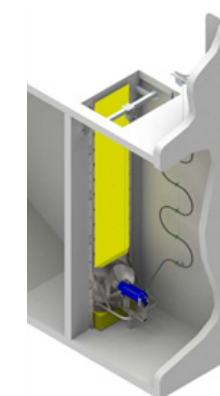
Equipped with an automatic control box, you no longer need to pay attention to mixing. There are two installation options, mounted on an inclined guide frame or with a vertical guide.

Because the submersible agitator is placed entirely in the manure, the level of the manure is an issue, which can be addressed with level switching.

The submersible agitators are available in 7.5 to 15.0 kW versions.

Highlights:

- Hot-dip galvanized or stainless steel construction
- Large thrust/revving speed
- Impellers in different variants



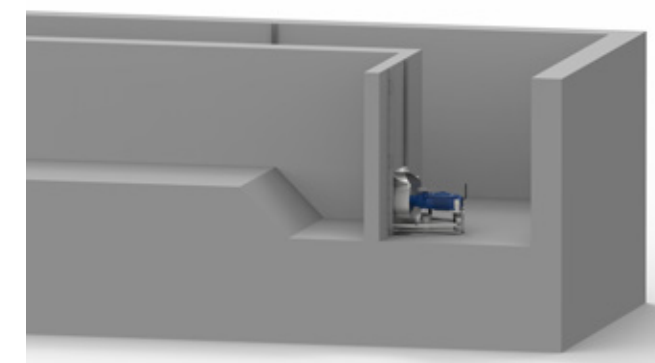
Available up to 4 meters



Submersible agitator Advanced (Galvanised)



Submersible agitator Premium (Stainless steel)





Some features:

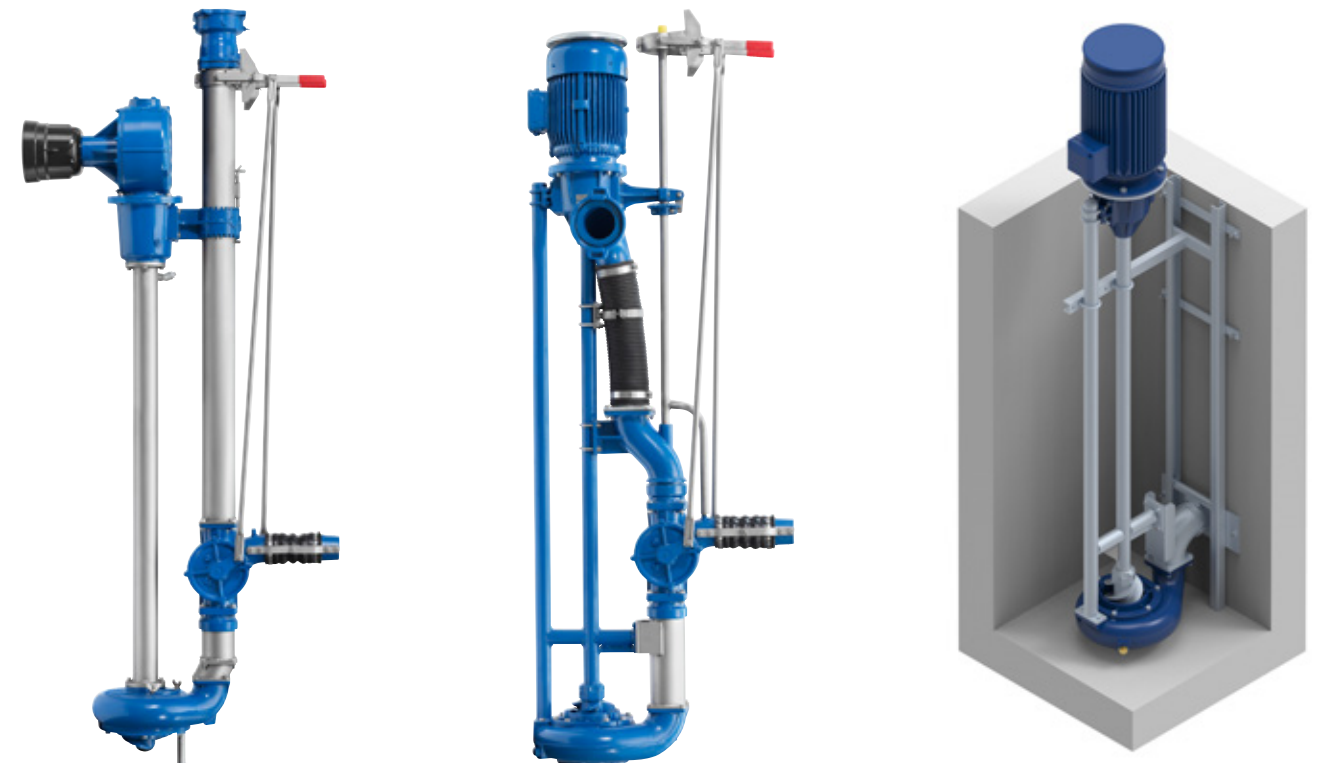
Highlights:

- Up to 10,000 L/min
- Mixes and pumps thick liquid manure
- With electric motor or for PTO and combi drive
- Available for pit depths of 1.5-6.0 meters
- Pumping height up to 47 meters
- Pump housing with bottom or top entry
- Equipped with screw impeller with shredding device
- Cast steel pump housing and stainless steel lifting pipes

Eisele Vertical pump

The vertical V-pump is enormously powerful with a yield of up to 10,000 L/min, even when mixing and pumping very thick manure. Extremely robust and highly reliable, the vertical V-pump is a good choice for applications requiring higher yields. It is a proven design, fitted with modern technology over the years, with a proven track-record.

In short, this pump can be customized for any application. Through our specialists, the pump can be custom configured for your application, with your fattening composition, complete with a guarantee of proper operation.



PTO driven

Electric driven

- The inlet can be fitted with a cutting device, which cuts long grass (silage).
- In fixed installation, the pump can be connected to a frost-free underground pipe via a guided frame. With a top connection, the pump can also be made mobile.
- The pump can be fitted with nozzles for mixing manure.
- Royal de Boer has very good experiences with this pump in sandbox flushing systems.
- The pump can be equipped with bottom suction, which virtually empties the cellar. The pump is also available with top suction, making it less easy to suck up stones.



Lower intake



Top intake

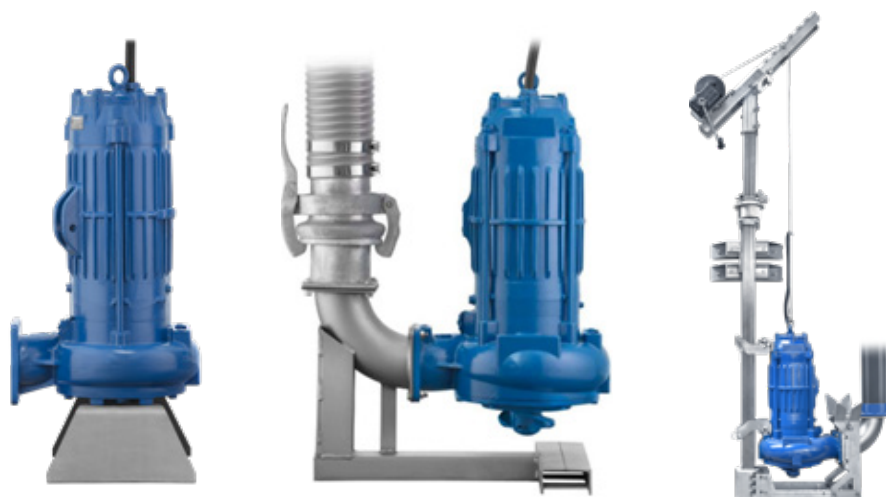


Eisele AT Submersible motor pump



A pump used in sump and manure pits must be easy to operate and have a well-thought-out design. The AT submersible motor pump meets all these requirements, it is highly efficient and has protection class IP68. The integrated shredder completely removes elements that would otherwise clog the pipe. The AT submersible motor pump stands out for its compact dimensions and is easy to install. And that is why it has already been installed thousands of times in the agricultural sector.

Maximum Pumping head	Pump capacity	Power
9 – 25 Meters	2.500 – 6.700 L/min	4,0 – 22,0 kW



Highlights:

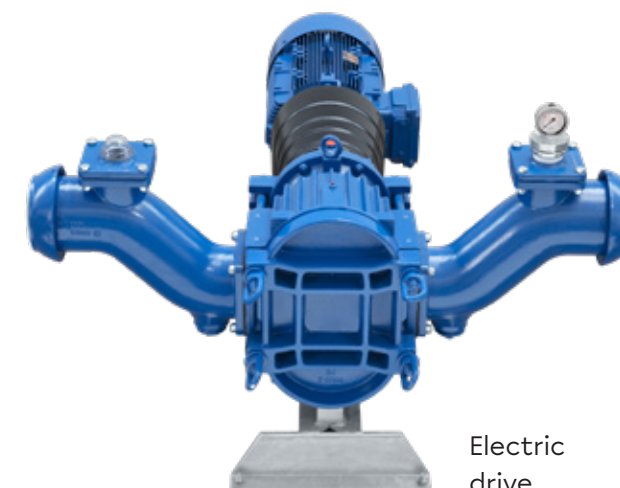
- For sump and manure pits
- Requires little space and is easy to install
- Large power range



Eisele lobe pump DK

The lobe pump DK is extremely robust and effective. Drive is possible either PTO (**Advanced version**) or electric (**Premium version**), making it very flexible in its use. The operating pressure is 4-10 bar, which allows pumping liquids with up to 30% dry matter. The pump is self-priming and capable of pumping manure over long distances. The capacity ranges from 450-6000 L/min, depending on the liquid to be pumped. The pumps come standard with wear poles and can be quickly dismantled with 3-lobe rotors.

The lobe pump is available as single pump, pump with electric drive and as a tractor-driven pump.



Electric drive



Highlights:

- Pump speed from 450 to 6000 L/min
- PTO or electric drive possible
- Pump pressure 4-10 bar



PTO drive

Type	Power	Pump Capacity
Electric drive DK	7,5 – 22,0 kW	600 – 2.350 L/min
PTO drive DK	30 – 63 kW	1.500 – 6.000 L/min

Mission, Vision

Mission

Where cows feel at home

We deliver the products and knowledge that create the best living environment for cows, so that the farmer can work efficiently and achieve optimal results.

Vision

We deliver quality in everything we do. We are pioneering and innovative, in both our products and our services. We lead the way, we are ground-breaking. We do this together with our customer. In a constantly changing world, we identify and respond to opportunities. We create such flexibility through standardisation and modularity.